

Expand MonitorStand XL



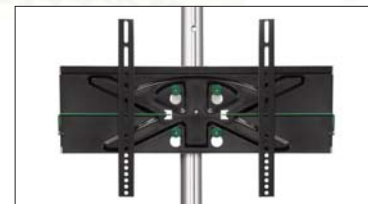
Add a digital presentation to your event display



The Expand MonitorStand XL can easily be integrated with your other event displays. By combining your printed and digital messages, you can create an exciting presentation that further strengthens your brand's message.



The extra stable base collapses for easy transport and storage. When ready for set-up, simply flip the base upside down and fold out the legs.

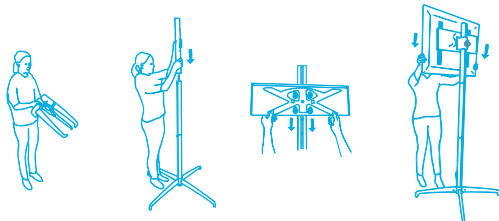


Monitors are mounted using the universal VESA standard 200 x 200 up to 400 x 600.

Expand MonitorStand XL

LCD screens are a whole new type of media within portable displays and with the Expand MonitorStand XL you can join this marketing revolution. Our extra large monitor holder is stable and packs down into one easy-to-carry bag. The Expand MonitorStand XL can be used as a freestanding monitor holder (as shown above) or partially integrated with the Expand

LinkWall, Expand MediaWall or the Expand MediaWall XL (as shown on the reverse) When the product is used with these mural systems, the panels are cut to fit the foot and the monitor. The pole has a channel where you can easily hide the cables and wires. Please note: an LCD monitor is not included and this product can hold a monitor up to 92.6 lbs. (approximately a 60" monitor).



Foot Print:
30" x 30" (762 x 762 mm)

Product Weight:
38 lbs. with nylon bag

Adjustable Monitor Height*:
63", 66 1/16", 70 7/8" & 74 13/16" (160, 170, 180 & 190 cm)

*Heights listed above are for the mounting holes on the vertical pole. Actual monitor height will vary depending on monitor size and mounting location.